

# FILTER BAGS

## I. GENERAL:

This standard is intended to provide specifications for the procurement of the Filter Bags used in the North Side Generation Station Units 1 & 2 Circulating Fluidized Bed Boiler, AQCS Bag House. This Bag House is utilized to meet EPA emission requirements and these bags are designed specifically to fit in the Tube Sheet of the NSGS AQCS Bag House. No design deviations what so ever shall be accepted for this Filter Bag.

## II. DESCRIPTION OF FILTER BAG:

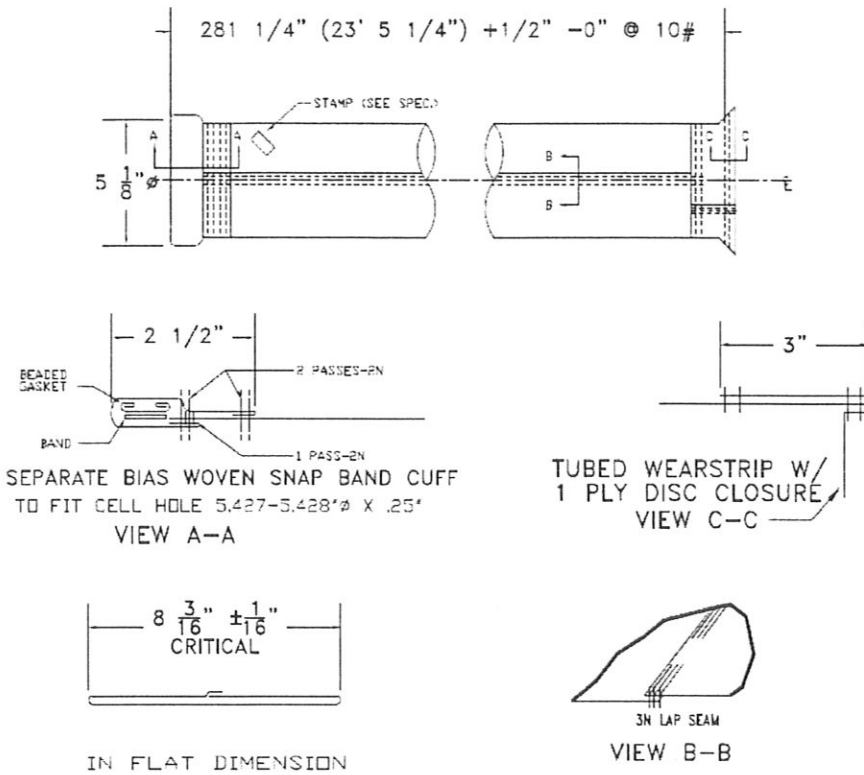
The following shall be provided:

- II.1.1. Bag Dimensions:.....5.13" Dia X 281.250" Long
- II.1.2. Bag, Flat Dimensions..... 8.1875 inches
- II.1.3. Bag Fabric..... Polyphenylene Sulfide Fiber (PPS)
- II.1.4. Fabric Weight.....18 oz. +- 1
- II.1.5. Fabric Thickness.....070" - .090"
- II.1.6. Sewing Thread:....Rastex, Type 4300, Polytetrafluoroethylene ( PTFE)
- II.1.7. Filter Media Denier (Fiber Diameter).....2.7
- II.1.8. Bag Stability..... Maximum 2% Residual Shrink or Stretch at 400°F
- II.1.9. Bag Permeability: ..... 20-40 CFM @ 0.5 W.G pressure drop
- II.1.10. Mullen Burst Pressure:.....Min. 440 PSI
- II.1.11. Scrim Count:.....19 X 11
- II.1.12. Scrim Weight:.....3.0 oz/sq yd
- II.1.13. Fabric Finish: .....Heat Set, Singed One Side

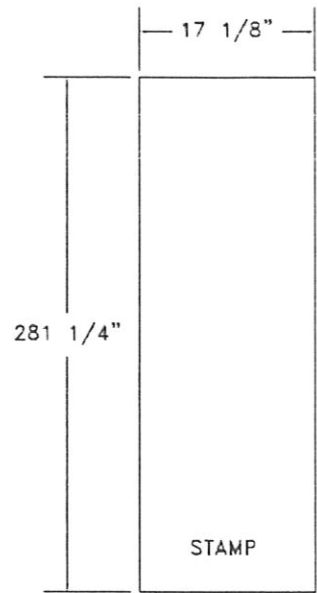
## III. GENERAL MANUFACTURING REQUIREMENTS:

- III.1.1. All bags shall have fused vertical seams
- III.1.2. All bags shall be manufactured with a separate Bias Woven Snap Band Cuff to fit cell holes 5.427 – 5.428 X .25"
- III.1.3. All bags shall be manufactured with a 1 ply disc closure Tubed Wear strip.
- III.1.4. Filter Bag Manufacturers must submit Fabric Certifications to JEA AQCS Manager for approval prior to start of bag manufacturing.

ASSEMBLY DRAWING



LAY CUT DRAWING



\*