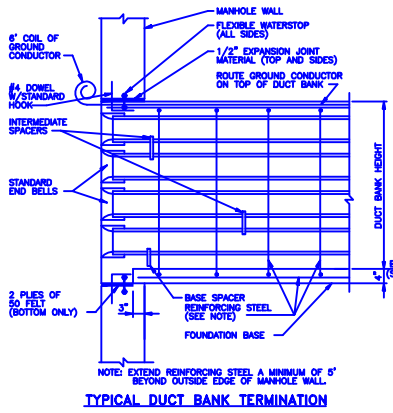
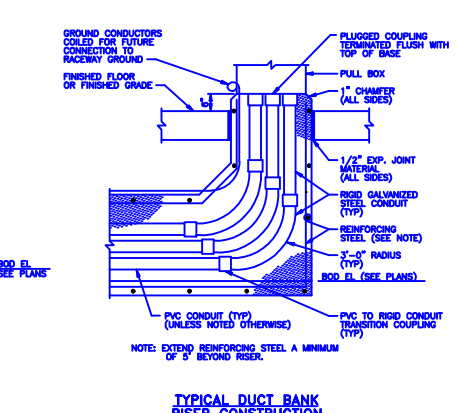


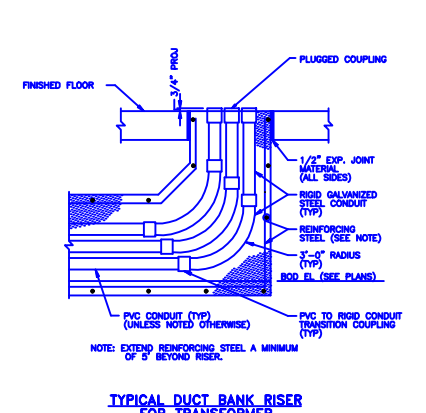
TYPICAL DUCT BANK CONSTRUCTION



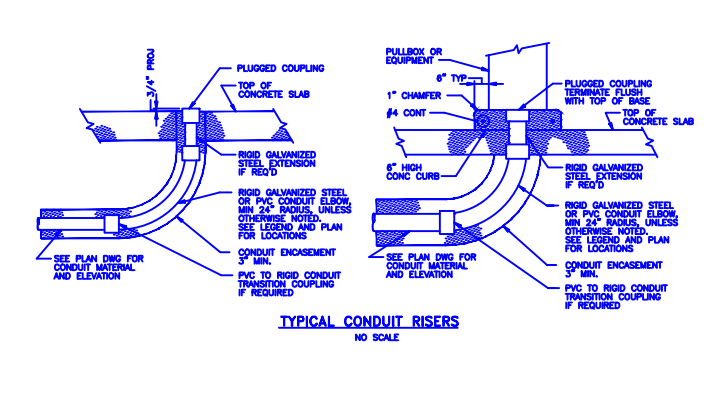
TYPICAL DUCT BANK TERMINATION



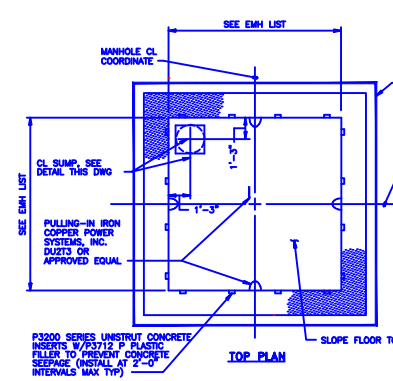
TYPICAL DUCT BANK RISER CONSTRUCTION



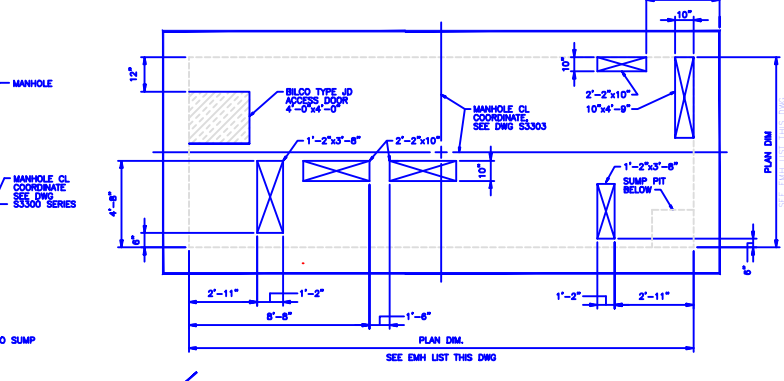
TYPICAL DUCT BANK RISER FOR TRANSFORMER



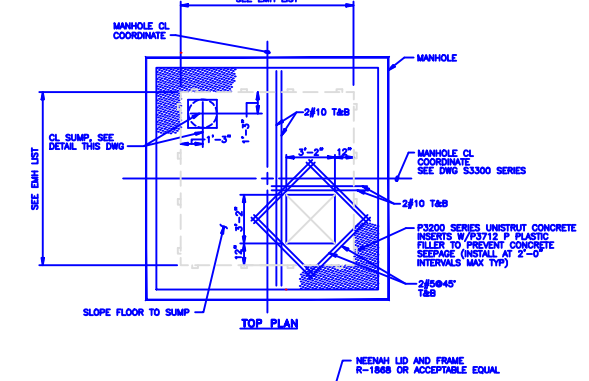
TYPICAL CONDUIT RISERS



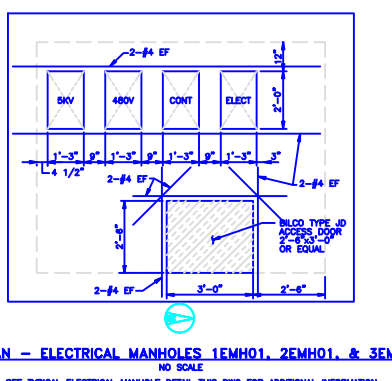
TOP PLAN



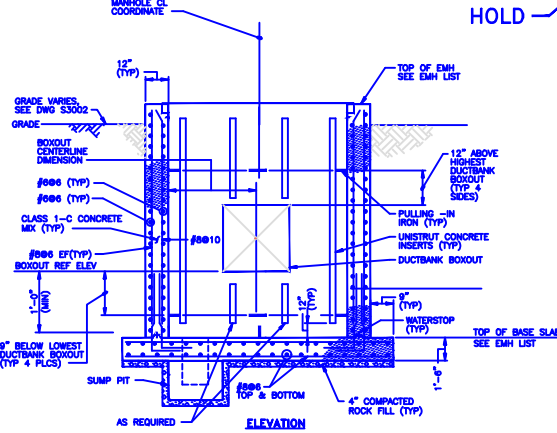
TOP PLAN



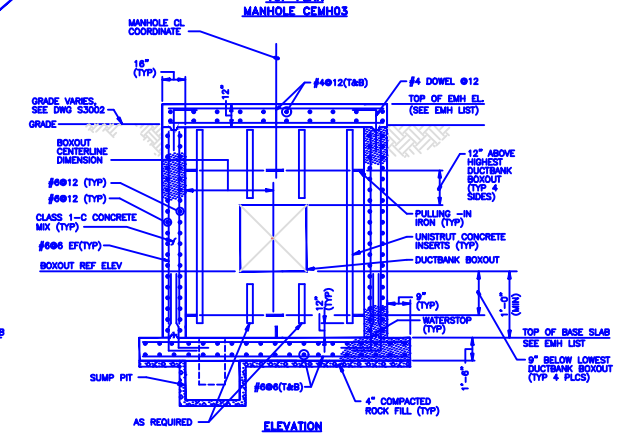
TOP PLAN



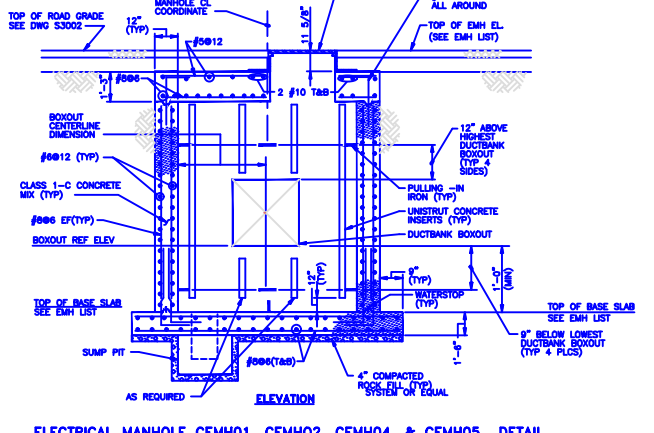
TOP PLAN - ELECTRICAL MANHOLES 1EMH01, 2EMH01, & 3EMH01



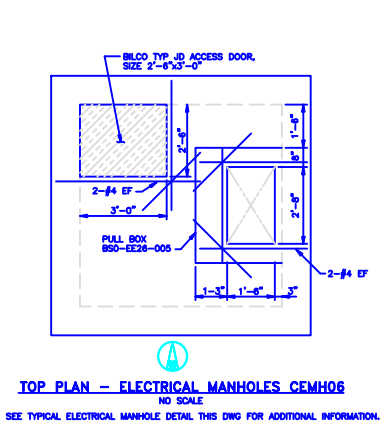
TYPICAL ELECTRICAL MANHOLE DETAIL



ELECTRICAL MANHOLE CEMH03 DETAIL



ELECTRICAL MANHOLE CEMH01, CEMH02, CEMH04, & CEMH05 DETAIL



TOP PLAN - ELECTRICAL MANHOLES CEMH02

NOTES:
 1. SEE TYPICAL EMH CONDUIT PENETRATIONS THIS DWG.
 2. DUCT BANK BOXOUT SHALL BE ONE INCH LARGER THAN THE DUCT BANK ON ALL SIDES EXCEPT BOTTOM AS SHOWN ON S3300 SERIES DWGS.
 3. FOR WALL REINFORCING AROUND BOXOUT, REFER TO TYPICAL BOXOUT REINFORCING ON DWG S3550.

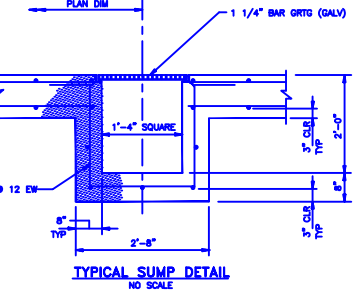
NOTES:
 1. SEE TYPICAL EMH CONDUIT PENETRATIONS THIS DWG.
 2. DUCT BANK BOXOUT SHALL BE ONE INCH LARGER THAN THE DUCT BANK ON ALL SIDES EXCEPT BOTTOM AS SHOWN ON S3300 SERIES DWGS.
 3. FOR WALL REINFORCING AROUND BOXOUT, REFER TO TYPICAL BOXOUT REINFORCING ON DWG S3550.

NOTES:
 1. SEE TYPICAL EMH CONDUIT PENETRATIONS THIS DWG.
 2. DUCT BANK BOXOUT SHALL BE ONE INCH LARGER THAN THE DUCT BANK ON ALL SIDES EXCEPT BOTTOM AS SHOWN ON S3300 SERIES DWGS.
 3. FOR WALL REINFORCING AROUND BOXOUT, REFER TO TYPICAL BOXOUT REINFORCING ON DWG S3550.

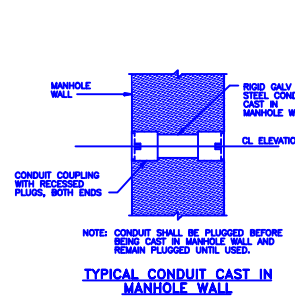
NOTES
 1. SEE DWG S3300 FOR GENERAL NOTES, KEY PLAN, AND LEGEND.
 2. SEE DWG S3320 FOR DUCT BANK SECTIONS AND NOTES.
 3. FOR ELECTRICAL MANHOLES IN ROADWAYS, CONTRACTOR SHALL FEATHER ASPHALT AROUND MANHOLE SUCH THAT THERE IS A SMOOTH TRANSITION.

ELECTRICAL MANHOLE LIST						
EMH NO.	TOP OF EMH ELEV.	TOP OF BASE SLAB ELEV.	INSIDE PLAN DIMENSION (EAST-WEST X NORTH-SOUTH)	LID	DWG NO.	EMH CONDUIT PENETRATIONS
1EMH01	87.50	75.94	10'x8'	SEE NOTE 2 BELOW	S3300	TYPICAL EMH CONDUIT PENETRATION DETAIL ON DWG S3321
2EMH01	87.75	76.03	10'x8'	SEE NOTE 2 BELOW	S3300	TYPICAL EMH CONDUIT PENETRATION DETAIL ON DWG S3321
3EMH01	87.75	76.03	10'x8'	SEE NOTE 2 BELOW	S3300	TYPICAL EMH CONDUIT PENETRATION DETAIL ON DWG S3321
CEMH01	87.50	76.33	10'x10'	SEE NOTE 1 BELOW	S3306	TYPICAL EMH CONDUIT PENETRATION DETAIL ON DWG S3321
CEMH02	87.50	76.40	10'x10'	SEE NOTE 1 BELOW	S3305	TYPICAL EMH CONDUIT PENETRATION DETAIL ON DWG S3321
CEMH03	88.00	73.14	24'x10'	SEE ELEC MH CEMH03 DETAIL THIS DWG	S3305	CEMH03 CONDUIT PENETRATION DETAIL ON DWG S3321
CEMH04	87.50	76.00	10'x10'	SEE NOTE 1 BELOW	S3305	TYPICAL EMH CONDUIT PENETRATION DETAIL ON DWG S3321
CEMH05	87.50	76.35	10'x10'	SEE NOTE 1 BELOW	S3304	TYPICAL EMH CONDUIT PENETRATION DETAIL ON DWG S3321
1EMH02	87.50	79.87R	7'x8'	BILCO TYPE JD ACCESS DOOR, SIZE 7'x8' OR EQUAL	S3302	1EMH02, 2EMH02, & 3EMH02 CONDUIT PENETRATION DETAIL ON DWG S3321
2EMH02	87.50	79.87R	7'x8'	BILCO TYPE JD ACCESS DOOR, SIZE 7'x8' OR EQUAL	S3302	1EMH02, 2EMH02, & 3EMH02 CONDUIT PENETRATION DETAIL ON DWG S3321
3EMH02	87.50	79.87R	7'x8'	BILCO TYPE JD ACCESS DOOR, SIZE 7'x8' OR EQUAL	S3301	1EMH02, 2EMH02, & 3EMH02 CONDUIT PENETRATION DETAIL ON DWG S3321
1EMH03	87.50	80.82	7'x7'	BILCO TYPE JD ACCESS DOOR, SIZE 7'x7' OR EQUAL	S3305	1EMH03, 2EMH03, & 3EMH03 CONDUIT PENETRATION DETAIL ON DWG S3321
2EMH03	87.50	80.82	7'x7'	BILCO TYPE JD ACCESS DOOR, SIZE 7'x7' OR EQUAL	S3305	1EMH03, 2EMH03, & 3EMH03 CONDUIT PENETRATION DETAIL ON DWG S3321
3EMH03	87.50	79.80	7'x7'	BILCO TYPE JD ACCESS DOOR, SIZE 7'x7' OR EQUAL	S3304	1EMH03, 2EMH03, & 3EMH03 CONDUIT PENETRATION DETAIL ON DWG S3321
CEMH06	87.50	80.84	7'x7'	SEE NOTE 3 BELOW	S3306	TYPICAL EMH CONDUIT PENETRATION DETAIL ON DWG S3321

NOTES:
 1. SEE ELECTRICAL MANHOLE CEMH01, CEMH02, CEMH04, AND CEMH05 DETAIL, THIS DRAWING.
 2. SEE TOP PLAN THIS DWG FOR ELECTRICAL MANHOLE 1EMH01, 2EMH01 & 3EMH01.
 3. SEE TOP PLAN THIS DWG FOR ELECTRICAL MANHOLE CEMH06.



TYPICAL SUMP DETAIL



TYPICAL CONDUIT CAST IN MANHOLE WALL

NO.	DATE	DESCRIPTION	APPROVED FOR CONSTRUCTION	REVISIONS AND RECORD OF ISSUE
3	07-27-2001	CONFORMED TO CONSTRUCTION RECORDS	WJ	
2	03-13-2000	GENERAL REVISIONS	WJ	
1	01-21-2000	REVISED ELECTRICAL MANHOLE LIST TABLE	WJ	
0	12-17-1999	APPROVED FOR CONSTRUCTION	WJ	
NO				

I HEREBY CERTIFY THAT THIS DOCUMENT WAS PREPARED BY ME OR UNDER MY DIRECT SUPERVISION AND THAT I AM A LICENSED PROFESSIONAL ENGINEER IN THE STATE OF FLORIDA UNDER THE LAWS OF THE STATE OF FLORIDA.
 DRAWN: RICHARD L. SANO
 DATE: 12-15-99, REG. NO.: 33364
 CHECKED: MAB DATE: 12-17-1999

REFERENCE DRAWINGS	
1.	60903-CMA -S3300 BUILDING & GROUNDS-UNDERGROUND UTILITIES GENERAL NOTES, LEGEND, & KEY PLAN
2.	60903-CMA -S3301 BUILDING & GROUNDS-UNDERGROUND UTILITIES AREA 1-PLAN
3.	60903-CMA -S3302 BUILDING & GROUNDS-UNDERGROUND UTILITIES AREA 2-PLAN
4.	60903-CMA -S3303 BUILDING & GROUNDS-UNDERGROUND UTILITIES AREA 3-PLAN
5.	60903-CMA -S3304 BUILDING & GROUNDS-UNDERGROUND UTILITIES AREA 4-PLAN
6.	60903-CMA -S3305 BUILDING & GROUNDS-UNDERGROUND UTILITIES AREA 5-PLAN
7.	60903-CMA -S3306 BUILDING & GROUNDS-UNDERGROUND UTILITIES AREA 6-PLAN
8.	60903-CMA -S3307 BUILDING & GROUNDS-UNDERGROUND UTILITIES AREA 7-PLAN
9.	60903-CMA -S3308 BUILDING & GROUNDS-UNDERGROUND UTILITIES AREA 8-PLAN
10.	60903-CMA -S3320 BUILDING & GROUNDS-UNDERGROUND UTILITIES ELECTRICAL DUCT BANK SECTIONS & DETAILS
11.	60903-CMA -S3321 BUILDING & GROUNDS-UNDERGROUND UTILITIES ELECTRICAL DUCT BANK SECTIONS & DETAILS
12.	60903-CMA -S3322 BUILDING & GROUNDS-UNDERGROUND UTILITIES ELECTRICAL MANHOLE SECTIONS & DETAILS
13.	60903-CMA -S3323 BUILDING & GROUNDS-UNDERGROUND UTILITIES SECTIONS AND DETAILS
14.	60903-CMA -S3324 BUILDING & GROUNDS-UNDERGROUND UTILITIES SECTIONS AND DETAILS

PROJECT: 60903-CMA -S3322
 DRAWING NUMBER: 3
 JEA
 BRANDY BRANCH STATION
 BUILDING & GROUNDS-UNDERGROUND UTILITIES ELECTRICAL MANHOLE SECTIONS AND DETAILS

12/22/01
 12/22/01
 12/22/01