

**TECHNICAL SPECIFICATION**

**FOR**

C-10 HEAD CHUTE  
AND DIVERTER  
REPLACEMENT

PWO 31395107 (Engineering Support)  
PWO 31469963 (Work Completion)

Revision: 00  
Date 10/08/2024

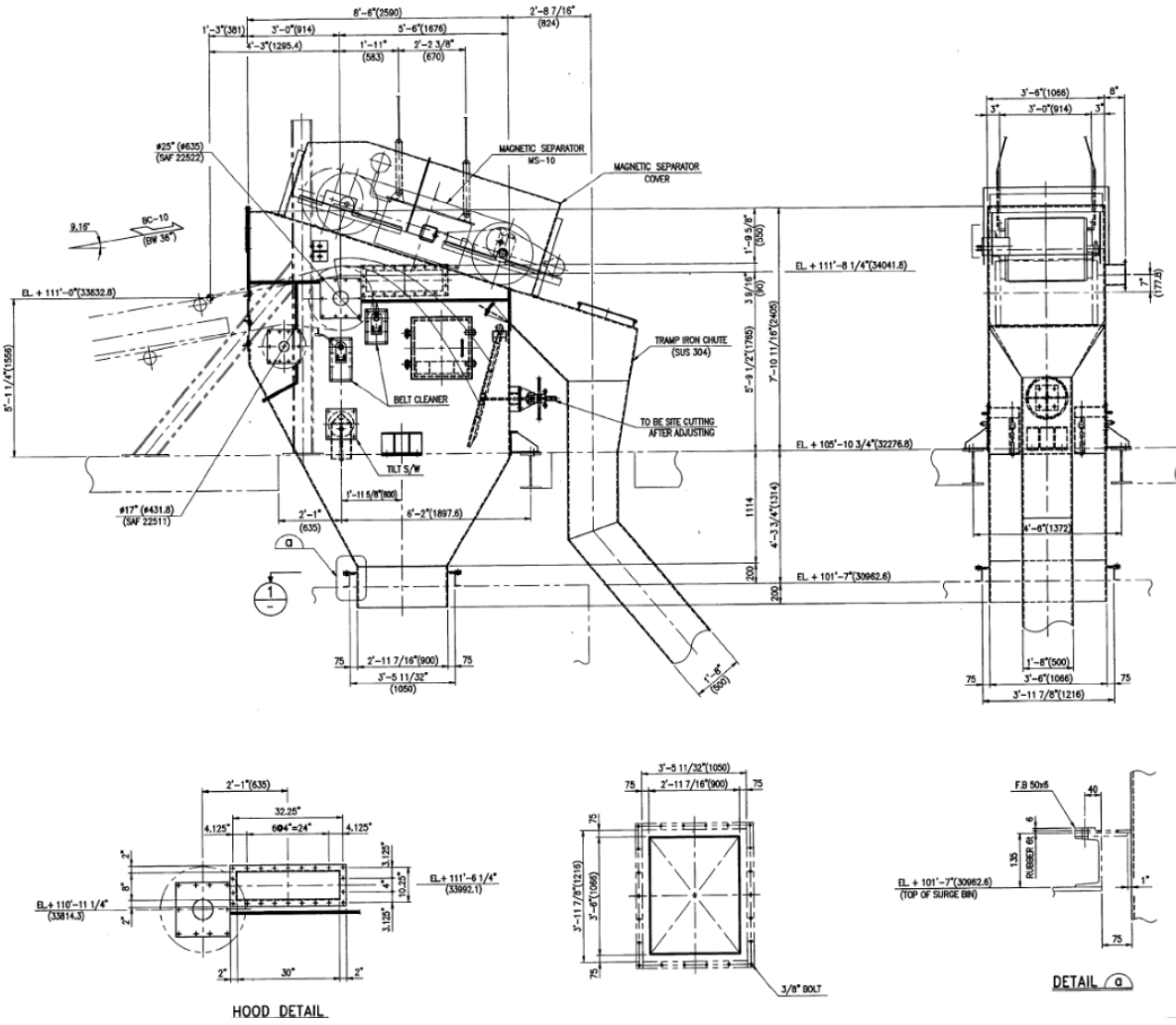
5.1 **Equipment Images:**

- C-10 HEAD CHUTE AND DIVERTER

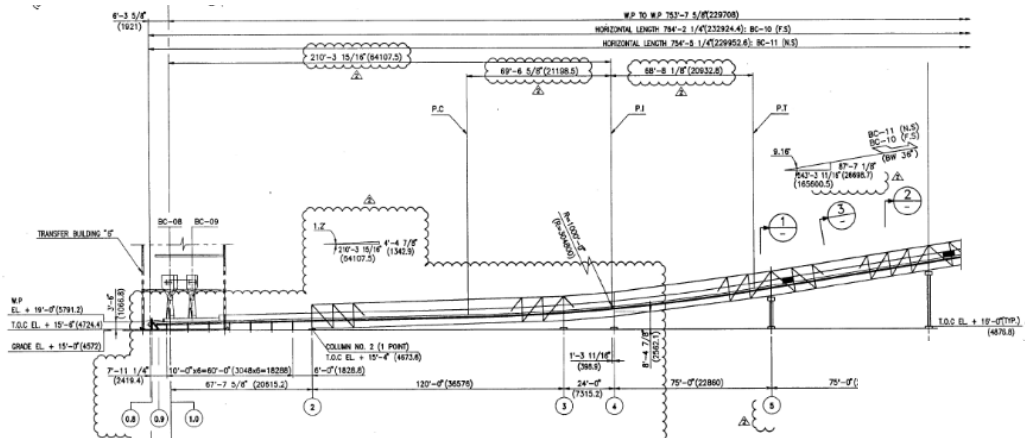




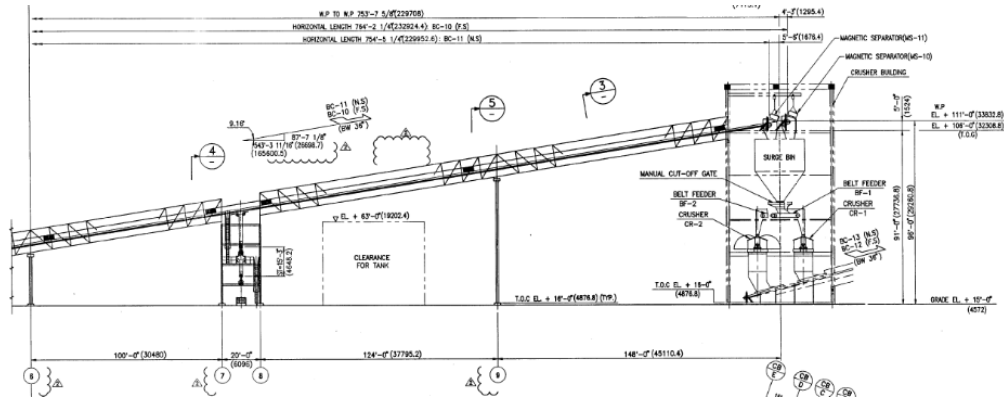
B. Reference JEA Drawing JEA-BC10-d100 – Rev A (1/1)  
 CONTROL NUMBER: 101528



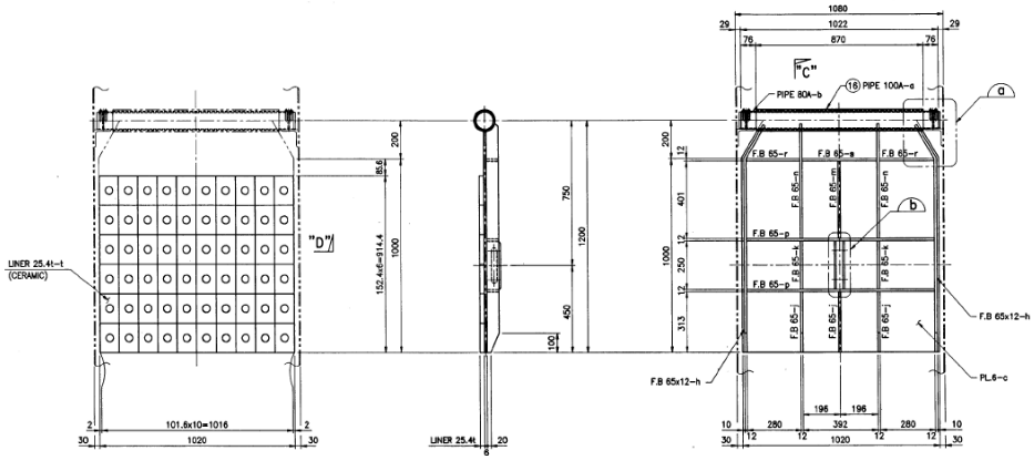
C. Reference JEA Drawing JEA-BC10&11-A100 – Rev F (1/2)  
 CONTROL NUMBER: 101315



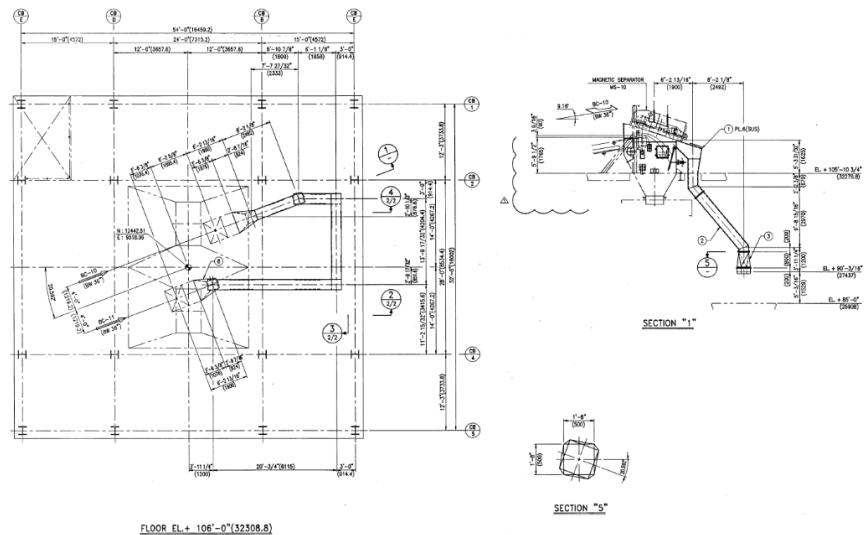
D. Reference JEA Drawing JEA- BC10&11-A100 – Rev F (2/2)  
CONTROL NUMBER 101316



E. Reference JEA Drawing JEA-BC10-D104 – Rev F  
CONTROL NUMBER: 102880



F. Reference JEA Drawing JEA-BC10&BC11-D100 – Rev F (1/2)  
CONTROL NUMBER: 101530



### 5.3 Equipment / System Specification

#### A. Process Parameters / Operating Conditions

- HEAD CHUTE FABRICATED AND MACHINED FROM TASSCO 1/2" XT, with TASSCO 3/8" XT (ALTERNATIVE THROUGH HARDENED, WEAR RESISTANT MATERIAL ACCEPTABLE Hardness: 450 – 514 BHN).
- HEAD CHUTE TOP COVER TO CLOSE OFF REMOVAL OF ELECTROMAGNETIC SEPARATOR TO BE FABRICATED FROM TASSCO 1/4" XT (ALTERNATIVE THROUGH HARDENED, WEAR RESISTANT MATERIAL ACCEPTABLE Hardness: 450 – 514 BHN).
- TRAMP IRON CHUTE COVER TO CLOSE OFF DUE TO REMOVAL OF ELECTROMAGNETIC SEPARATOR TO BE FABRICATED FROM TASSCO 1/2" XT (ALTERNATIVE THROUGH HARDENED, WEAR RESISTANT MATERIAL ACCEPTABLE Hardness: 450 – 514 BHN).
- DAMPER BACKING PLATE FABRICATED FROM TASSCO 1/2" CORRHard (ALTERNATIVE THROUGH HARDENED, WEAR RESISTANT MATERIAL ACCEPTABLE Hardness: 450 – 514 BHN).
- WEAR PLATES TO BE 12" BY THE WIDTH OF THE DAMPER, CONSTRUCTED FROM TASSCO 1/2" FUSED ALLOY AS A BOLT IN LINERS. (ALTERNATIVE THROUGH HARDENED, WEAR RESISTANT MATERIAL ACCEPTABLE Hardness: 260 – 360 BHN)
- REMAINING MATERIALS FROM A36 MILD STEEL