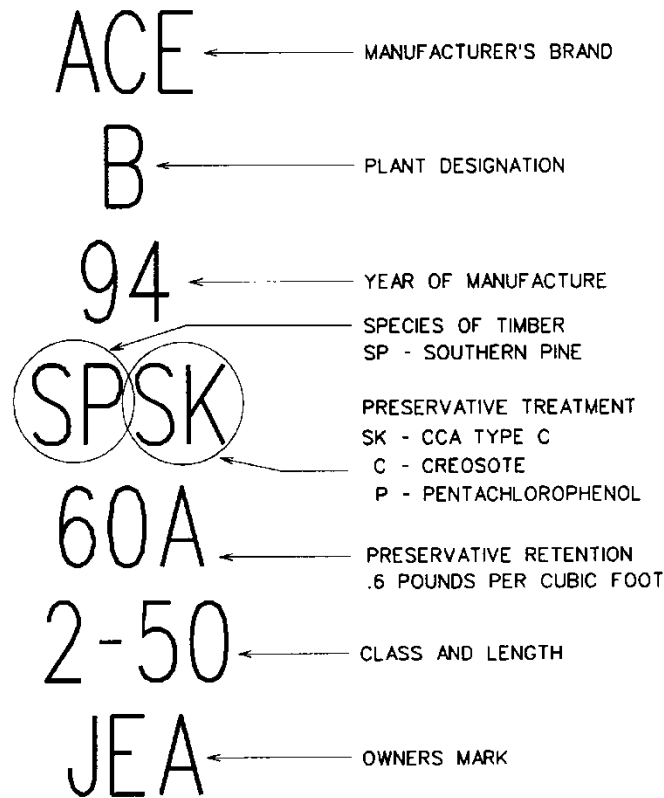


POLES

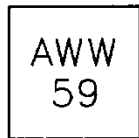
INTRODUCTION

1. The JEA integrated standards outlined on the following pages depend on strict adherence to these guidelines. Construction varying from these standards must be covered in NOTED FORM on the drawing by the design engineer.
2. Concrete and wood poles are predrilled in accordance with the pole drilling details of this Section. However, some holes will have to be drilled in the field and will require the engineer to call for either the plate DRILL-W or DRILL-C if he or she is aware of the extra holes to be drilled.
3. Equipment attachment locations called for on a construction standard or the following drilling details are denoted by the hole number at which the bolt will be placed.
4. Birthmark location on the pole varies with length and type. Larger poles may have two birthmarks -- if the pole is set extra deep, at least one birthmark will still be visible for identification. Unless special circumstances prevail, always set every pole with the birthmark facing the street (roadside). Split the angle on curves.
5. If concrete poles are set deeper than their normal setting depth, the crew installing the pole shall attach piece of #4 CU to the pole grounding loop to make it accessible from the groundline.
6. Poles shall be raked such that the side opposite to the face on which the load is applied shall be 90 degrees or perpendicular to the ground as shown.
7. Poles shall be oriented so that the unbalanced force bisects the conductor angle perpendicular to the load bearing face of the pole.
8. The split bolt assembly (SH30) is included in the 45 to 65 foot wood pole plates and should be installed in hole 7.
9. Additional washers, connectors, and #4 bare copper are issued with the concrete pole plates to be used for grounding purposes (See hardware grounding detail in the GROUNDING Section).
10. Unless otherwise stated, holes shown on the pole drilling details are in inches from the tip or the bottom of the pole roof. Holes are 1 inch in diameter on concrete poles and 7/8 of an inch in diameter on wood poles. Pole drilling details are not to scale.
11. A tag holder is issued with each pole plate for the purpose of identifying the pole address when the pole is installed. Adhesive for these tag holders is also issued with concrete poles.

POLE INSPECTION AND MANUFACTURER'S MARKINGS

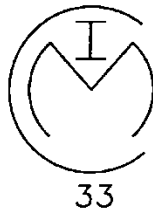


TYPICAL TOP MARK



INSPECTOR MARKINGS ARE GIVEN ON TOP BEFORE TREATMENT AND ON BOTTOM AFTER TREATMENT.

TYPICAL BOTTOM MARK



MARK INDICATES INSPECTION COMPANY NAME (I.E. AWW- A.W. WILLIAMS, IM-McCALLUM INSPECTION CO.) NUMBERS INDICATE INSPECTOR.

POLE INFORMATION

POLE SETTING DEPTHS		
LENGTH (FT)	WOOD POLE	CONCRETE POLE
30	5'-6"	6'-0"
35	6'-0"	6'-6"
40	6'-0"	7'-0"
45	6'-6"	7'-6"
50	7'-0"	8'-0"
55	7'-6"	8'-6"
60	8'-0"	9'-0"
65	8'-6"	10'-0"
70	9'-0"	11'-0"
75	9'-6"	12'-0"

WEIGHTS OF CCA TREATED WOOD POLES (IN POUNDS)				
LENGTH	CLASS 1	CLASS 2	CLASS 3	CLASS 4
30	1,224	1,068	924	798
35	1,572	1,368	1,182	1,026
40	1,956	1,692	1,470	1,272
45	2,358	2,046	1,770	1,536
50	3,029	2,626	2,275	1,976
55	3,530	3,062	2,652	2,301
60	4,069	3,523	3,055	2,646
65	4,622	4,004	3,471	3,016
70	5,207	4,518	3,913	--
75	5,816	5,051	4,375	--
80	6,455	5,597	4,849	--
85	7,124	6,169	5,350	--
90	7,807	6,760	5,863	--

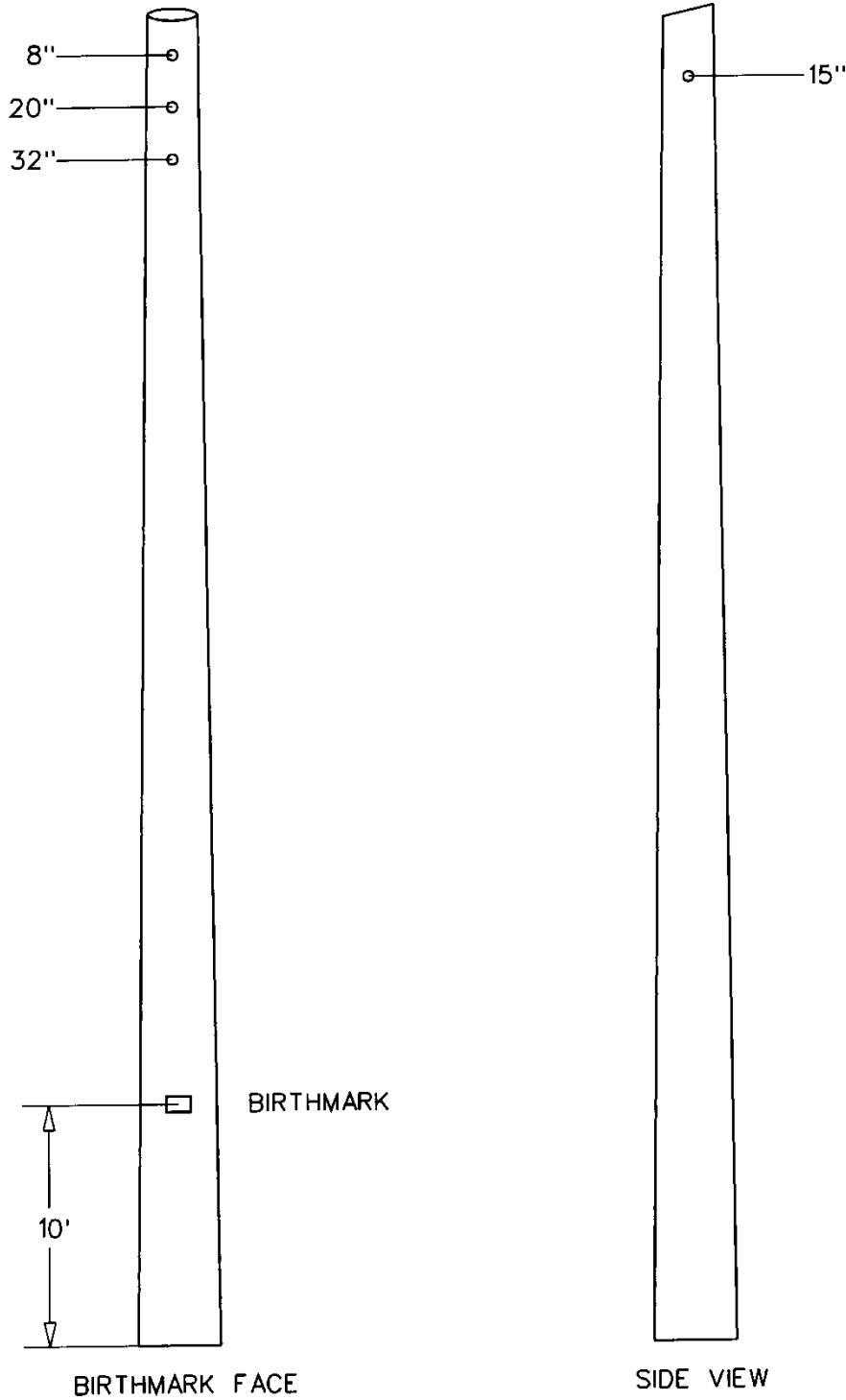
TIP DIMENSIONS OF WOOD POLES (IN INCHES)				
DIMENSION	CLASS 1	CLASS 2	CLASS 3	CLASS 4
MIN. TIP DIA.	8.6	8.0	7.3	6.7
MIN. CIRCUMFERENCE	27	25	23	21

POLE INFORMATION – CONTINUED

DIMENSIONS OF WOOD POLES SIX FEET FROM BUTT (DIAMETER IN INCHES)				
POLE LENGTH	CLASS 1	CLASS 2	CLASS 3	CLASS 4
30	11.6	10.8	10.2	9.4
35	12.4	11.6	10.8	10.0
40	13.1	12.3	11.5	10.7
45	13.7	12.9	11.9	10.3
50	14.3	13.4	12.4	11.6
55	14.8	13.8	12.9	12.1
60	15.3	14.3	13.4	12.4
65	15.8	14.8	13.8	12.9
70	16.2	15.3	14.3	13.2
75	16.7	15.6	14.6	--
80	17.2	16.1	15.0	--
85	17.5	16.4	15.3	--
90	17.8	16.9	15.6	--

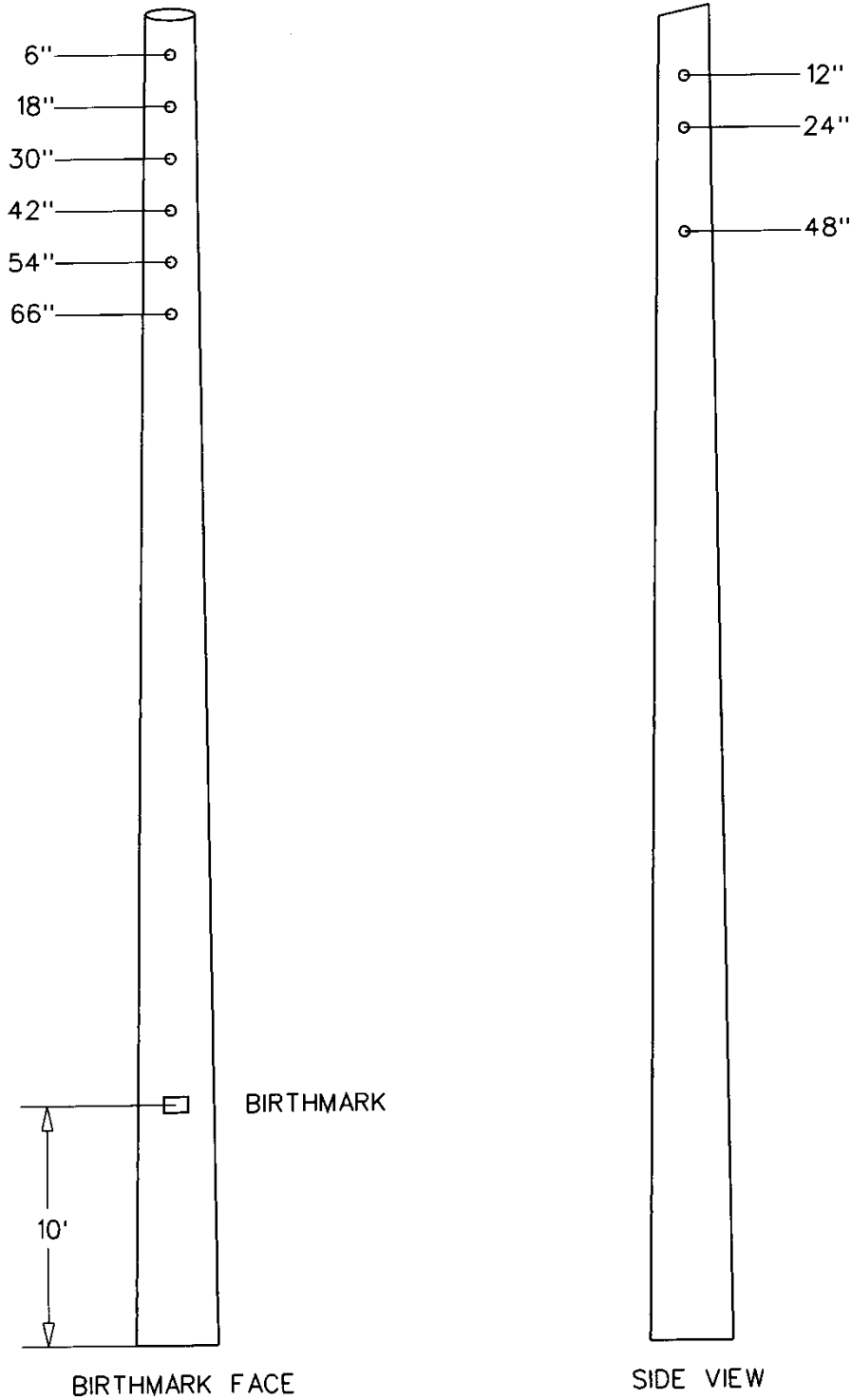
APPROXIMATE WEIGHTS OF CONCRETE POLES (IN POUNDS) AND DIMENSIONS (INCHES SQUARE)				
POLE LENGTH	CLASS OR TYPE	WEIGHT (LBS.)	TIP DIMENSION	BUTT DIMENSION
30	1	1,340	4	8.86
35	1	1,820	4	9.67
35	2	2,360	6	11.67
40	3	2,900	6	12.48
45	3	3,510	6	13.29
50	3	4,050	6.5	14.60
50	H	8,100	9	17.10
55	H	9,500	9	17.91
55	LT	18,100	13.25	22.16
55	HT	18,100	13.25	22.16
60	H	11,060	9	18.72
60	LT	20,400	13.25	22.97
60	HT	20,400	13.25	22.97
65	LT	22,900	13.25	23.78
65	HT	22,900	13.25	23.78
70	HT	25,100	13.25	24.59
75	HT	27,500	13.25	25.40
80	HT	30,000	13.25	26.21
80	XHT	37,375	16.55	29.51
85	HT	32,600	13.25	27.02
85	XHT	40,775	16.55	30.32
90	HT	35,600	13.25	27.83
90	XHT	44,275	16.55	31.13
95	HT	38,900	13.25	28.64
95	XHT	47,875	16.55	31.94
100	HT	42,100	13.25	29.45
100	XHT	51,475	16.55	32.75
105	HT	45,500	13.25	30.26
110	HT	49,000	13.25	31.07

POLE DRILLING DETAIL



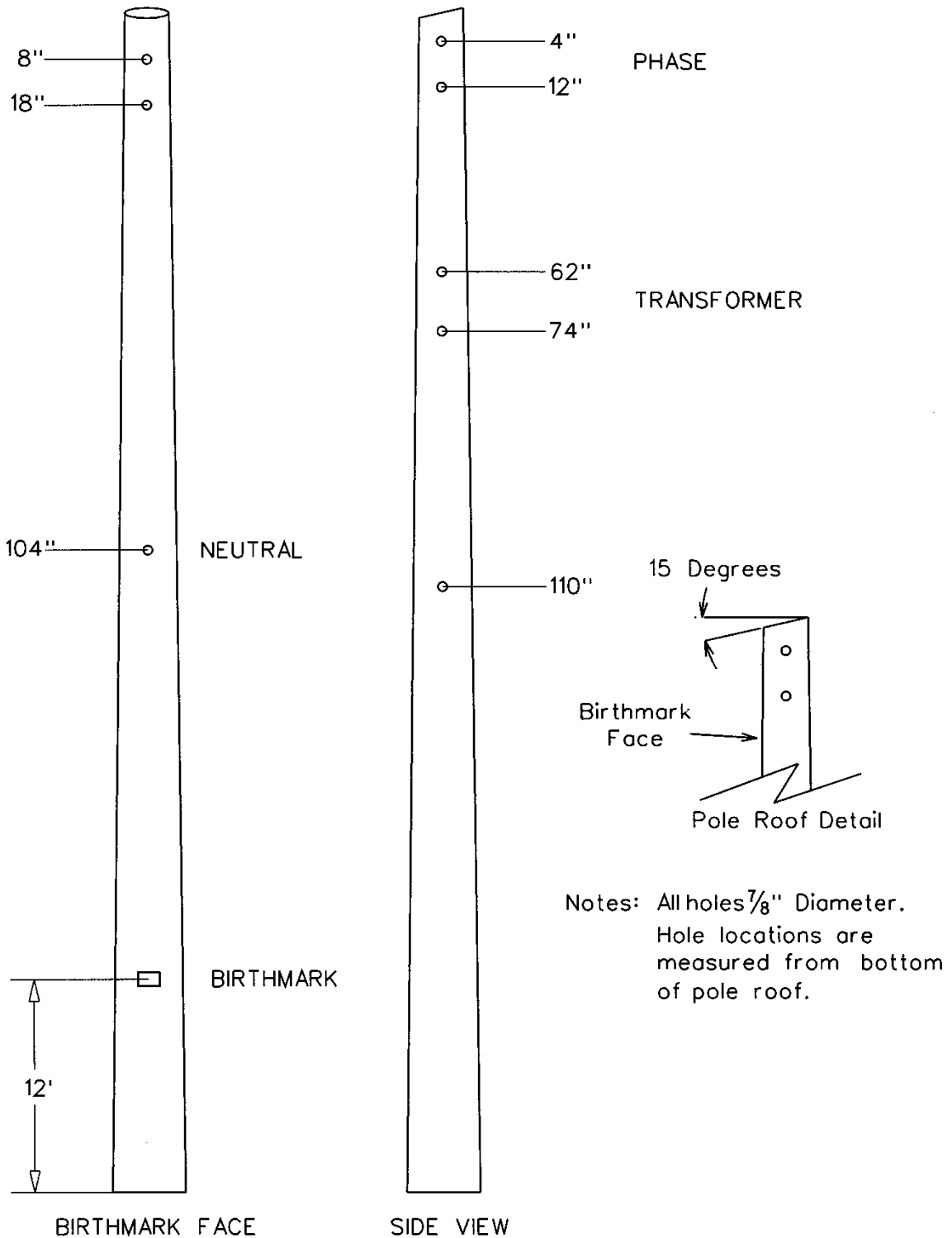
30 FOOT WOOD POLE - CLASS 4

POLE DRILLING DETAIL



35 FOOT WOOD POLE - CLASS 4

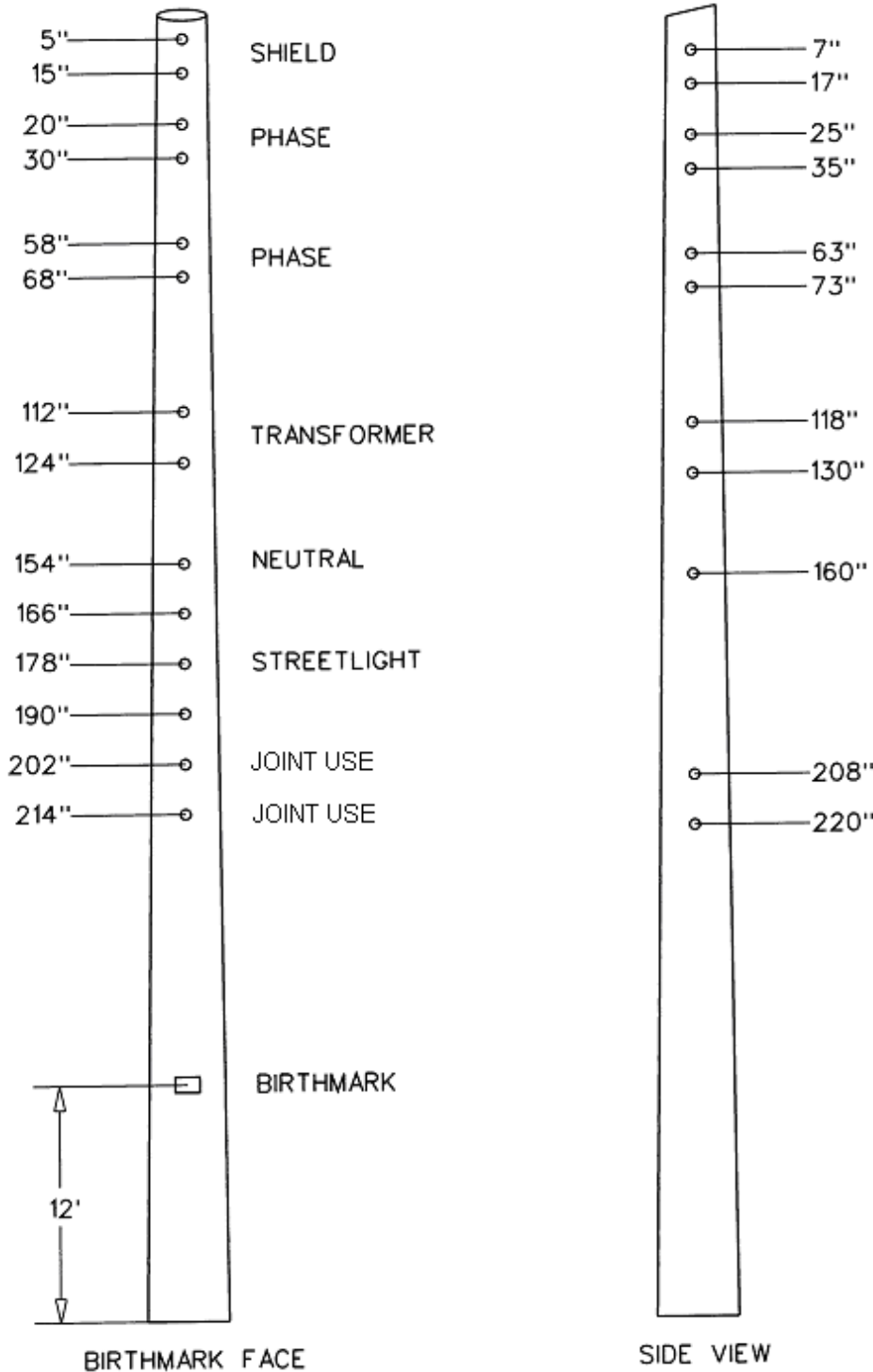
POLE DRILLING DETAIL



40 FOOT WOOD POLE - CLASS 4

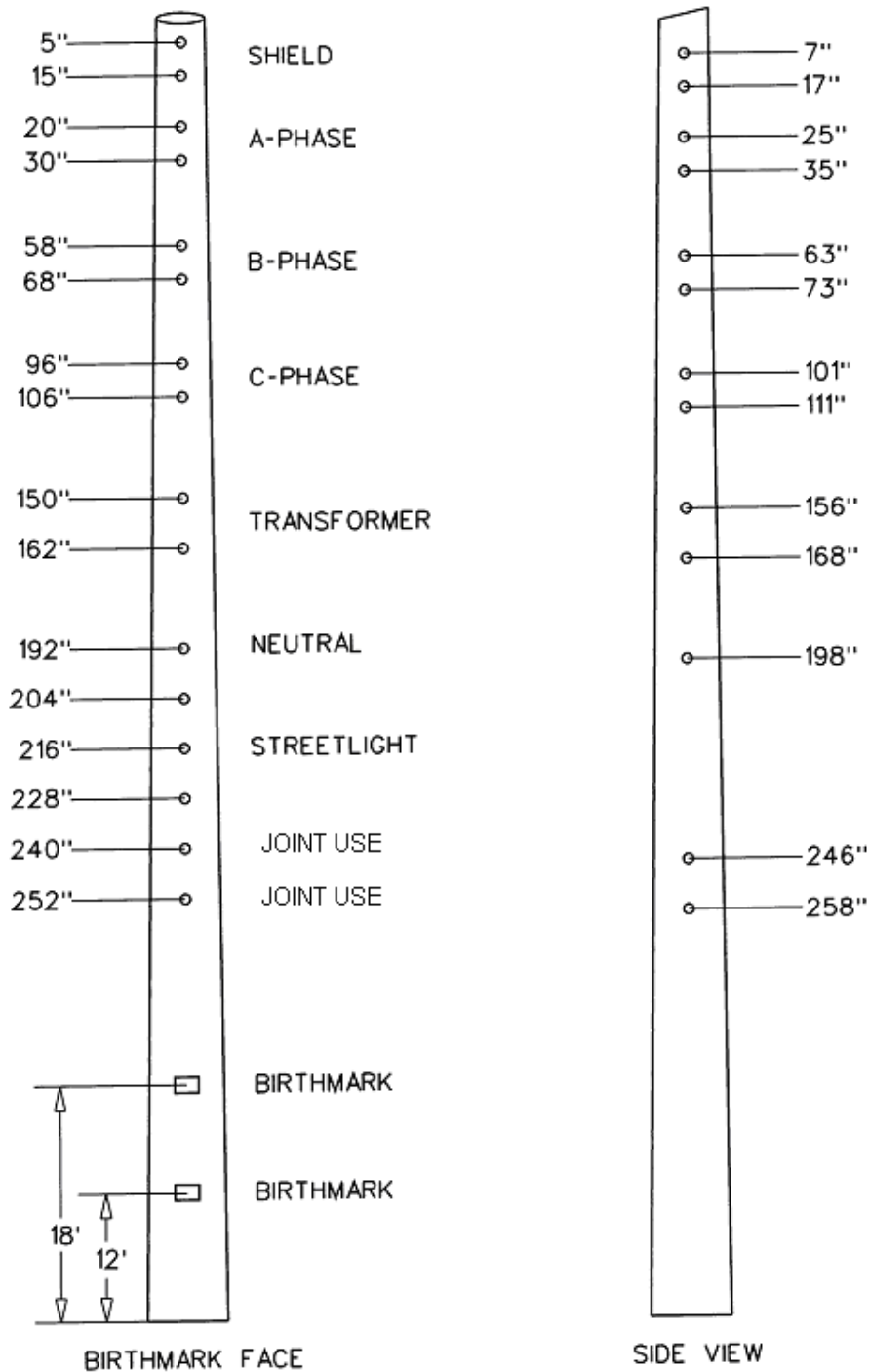
Notes: All holes $\frac{7}{8}$ " Diameter.
Hole locations are measured from bottom of pole roof.

POLE DRILLING DETAIL



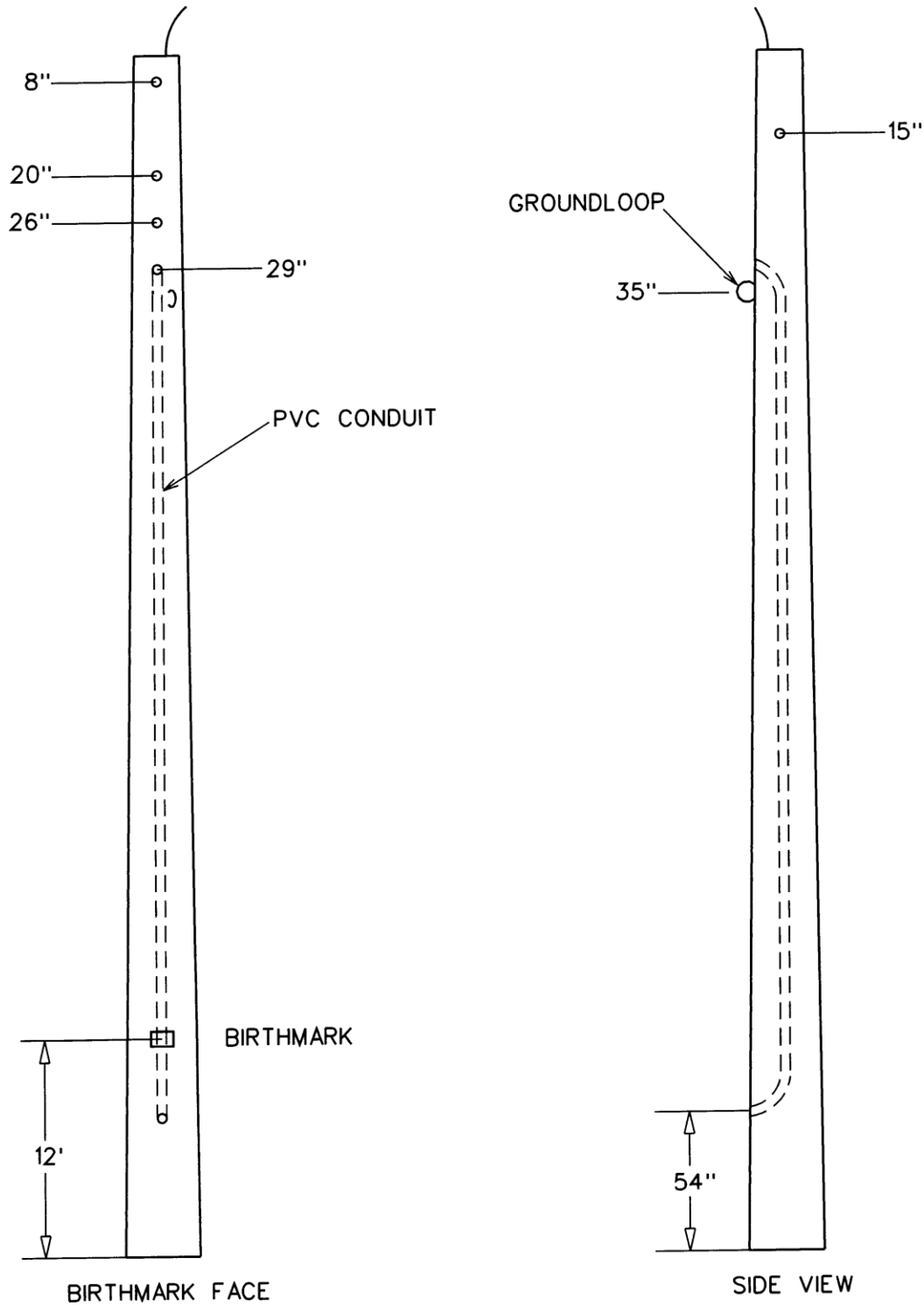
45 & 50 FOOT WOOD POLE - CLASS 3

POLE DRILLING DETAIL



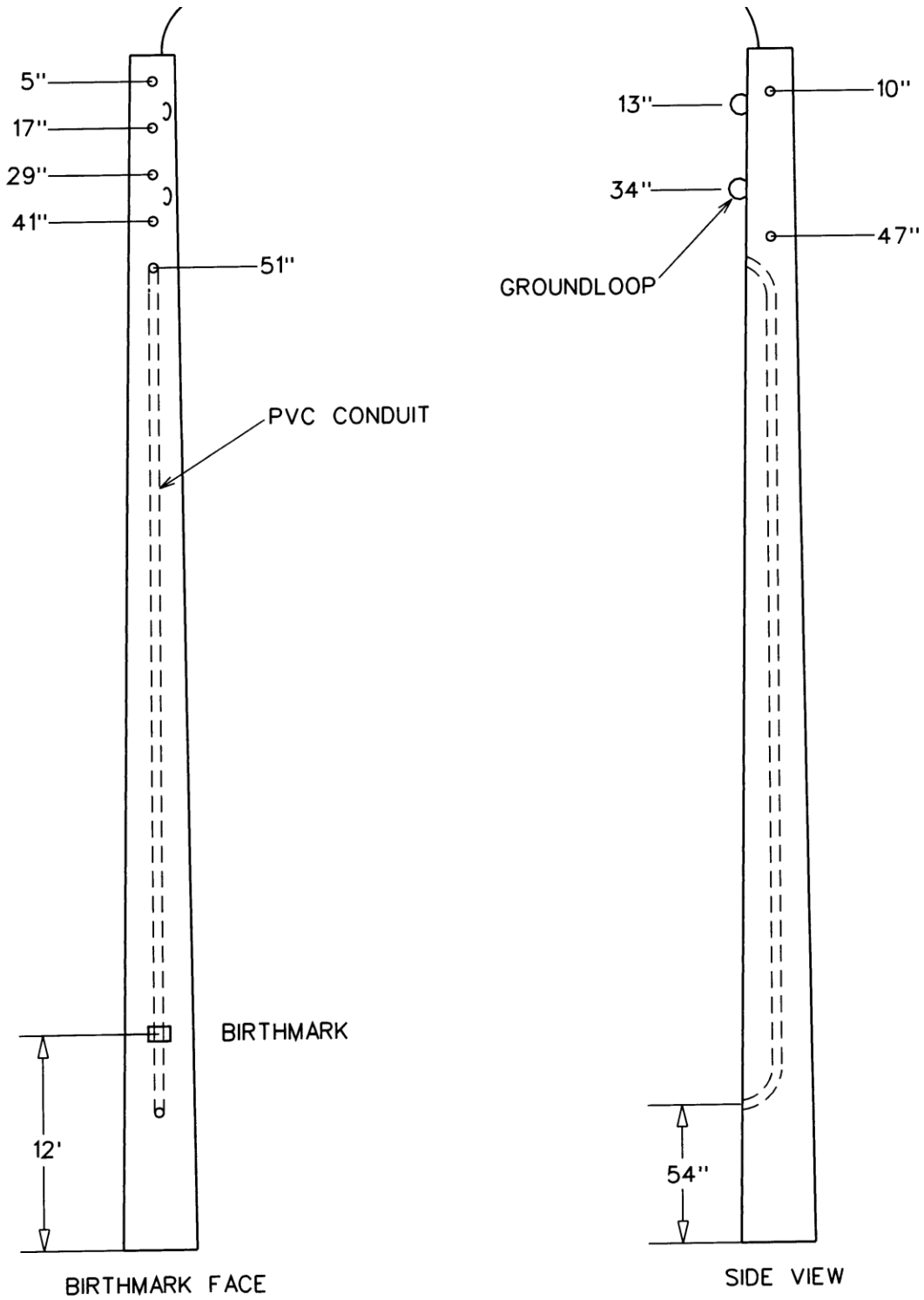
50 THRU 65 FOOT WOOD POLE - CLASS 1 OR 2

POLE DRILLING DETAIL



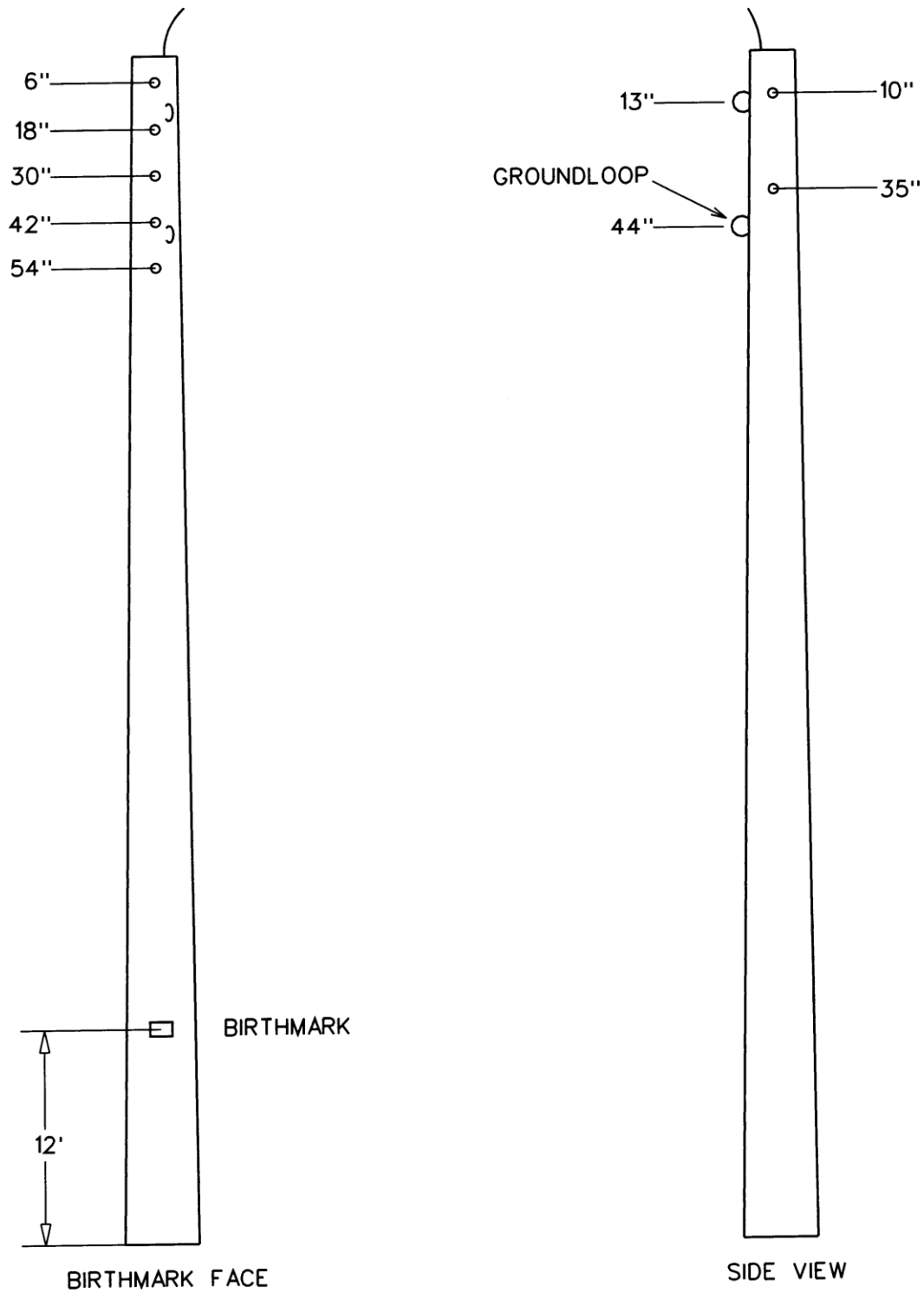
30 FOOT CONCRETE POLE - TYPE 1

POLE DRILLING DETAIL



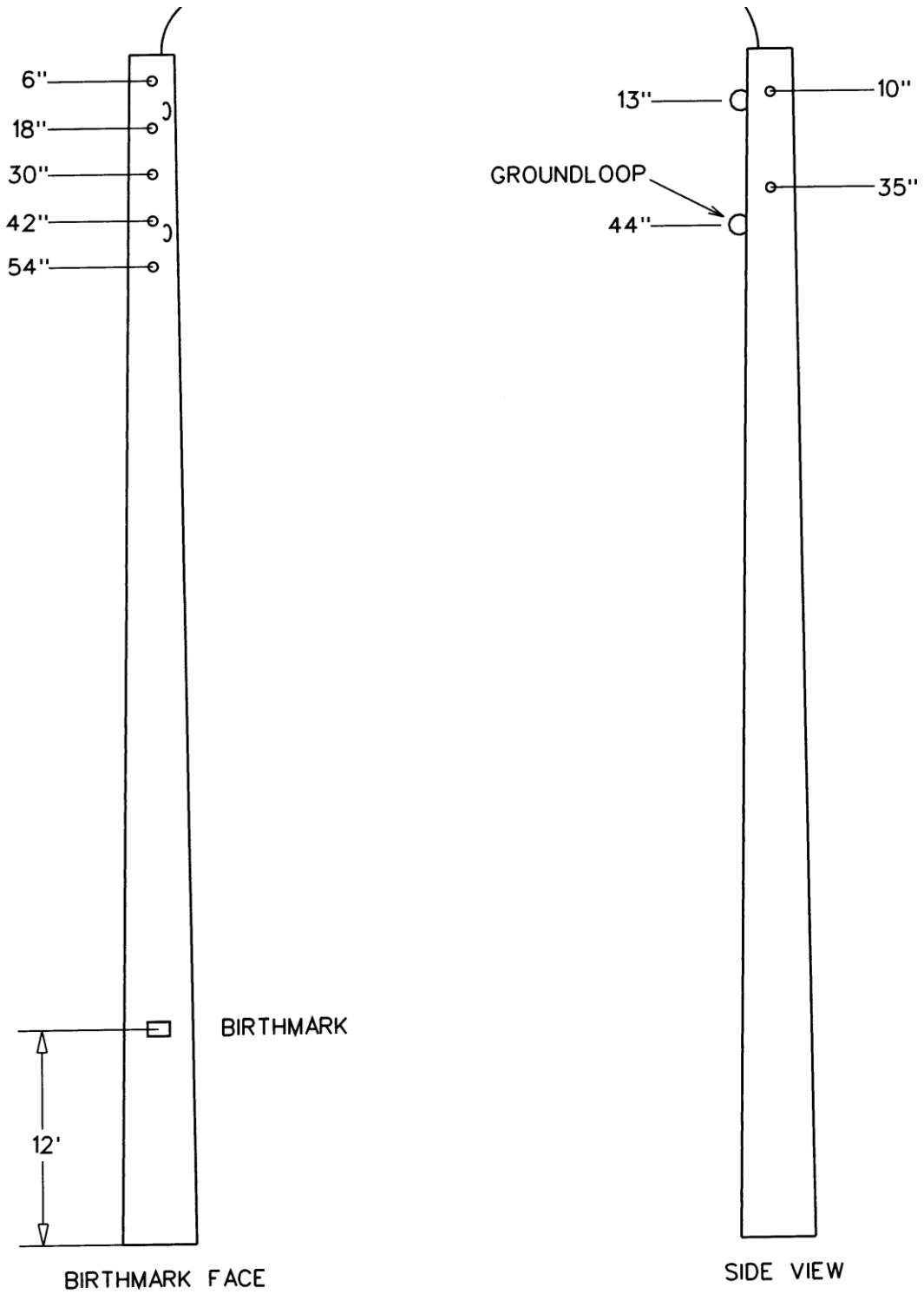
35 FOOT CONCRETE POLE - TYPE 1

POLE DRILLING DETAIL



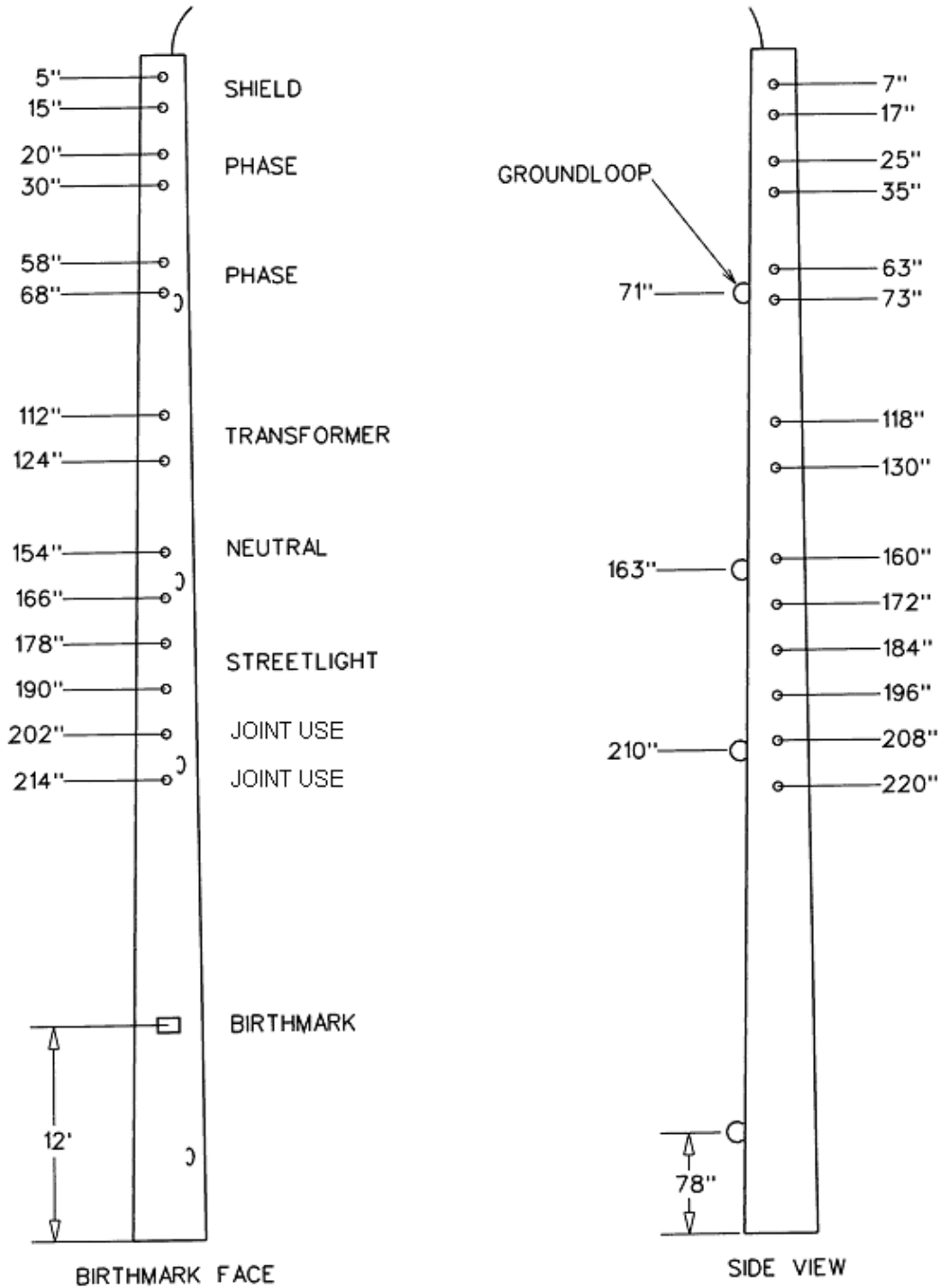
35 FOOT CONCRETE POLE - TYPE 2

POLE DRILLING DETAIL



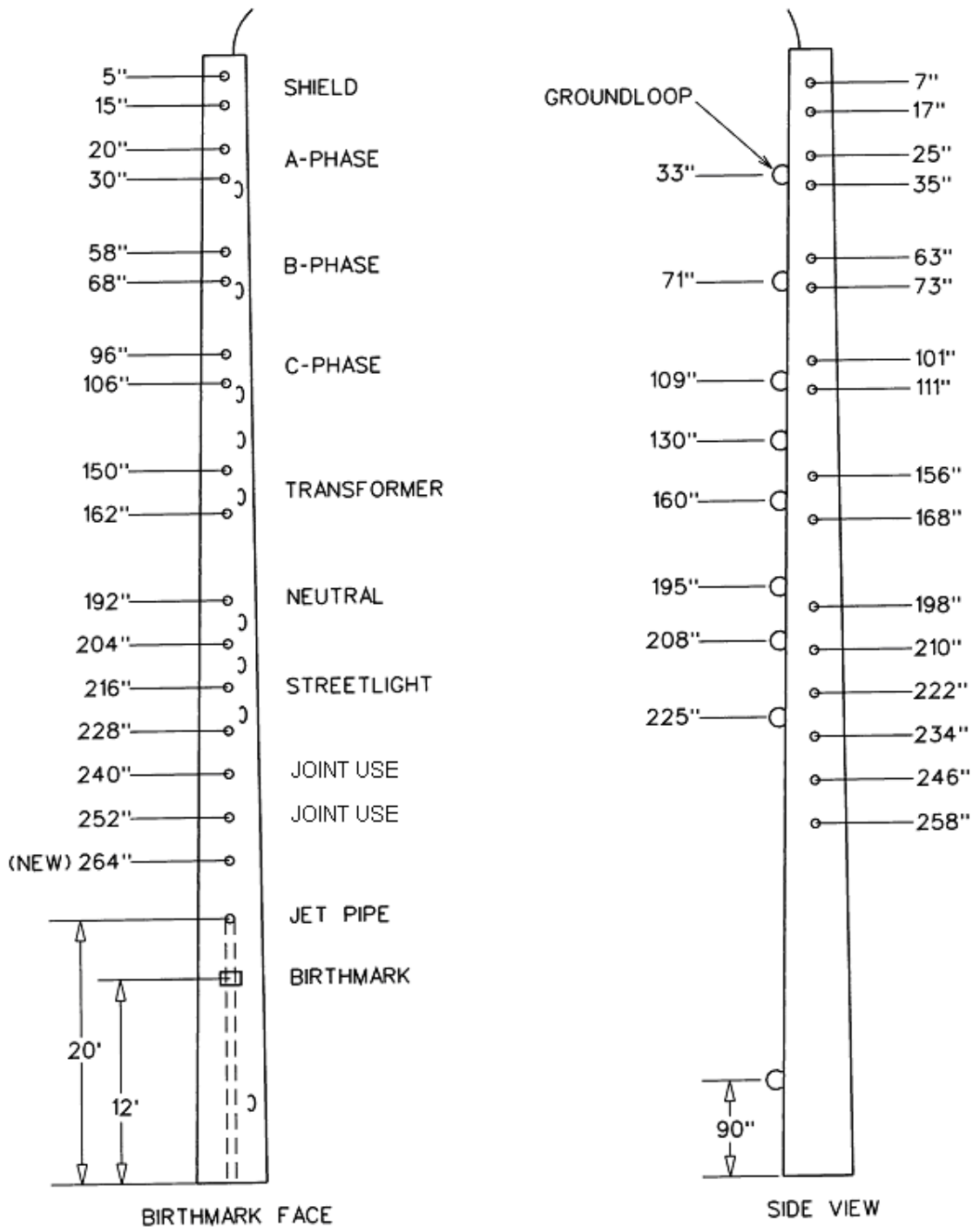
40 FOOT CONCRETE POLE - TYPE 3 (FOR LIGHTING ONLY)

POLE DRILLING DETAIL



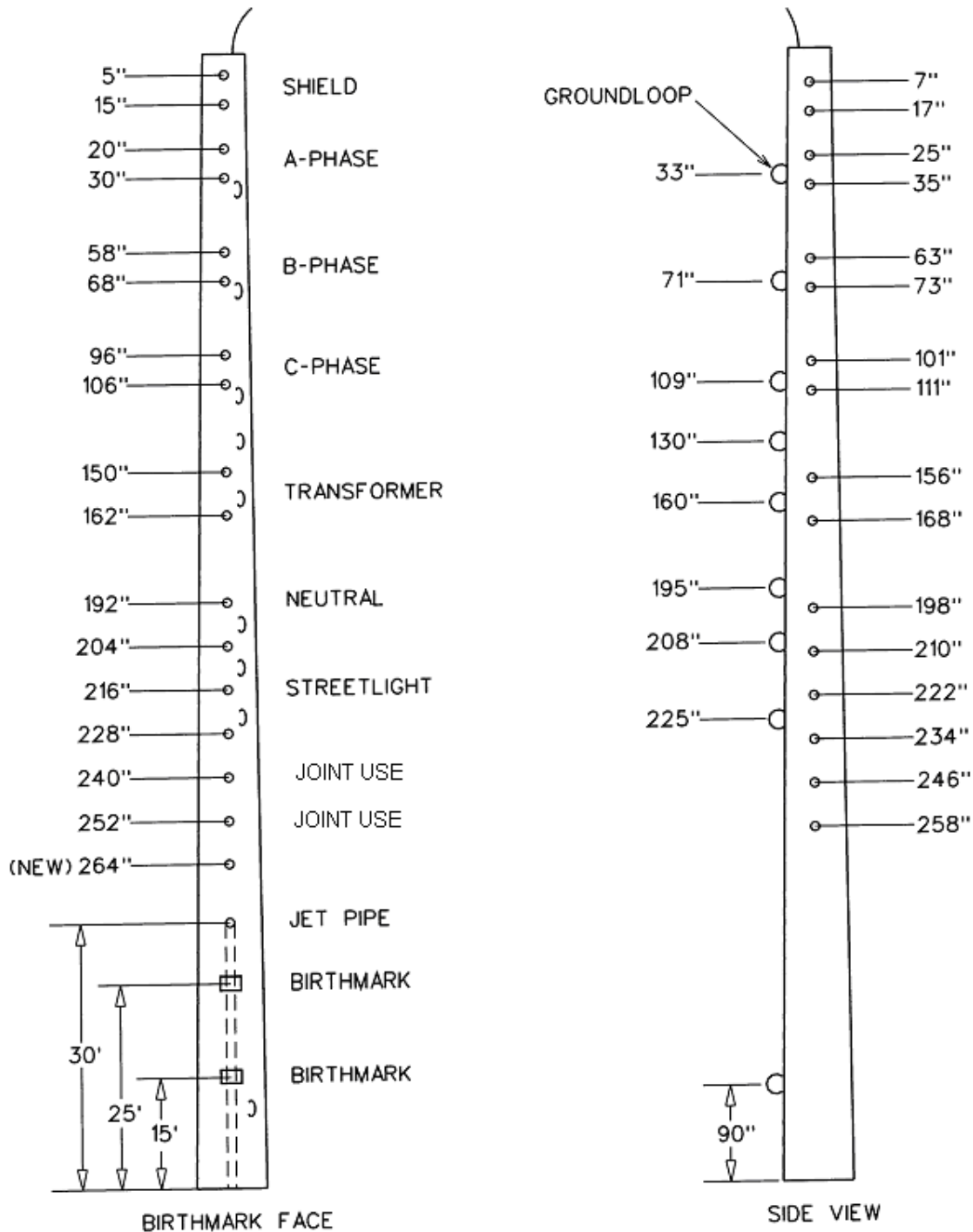
45 FOOT CONCRETE POLE - TYPE 3

POLE DRILLING DETAIL



50 FOOT CONCRETE POLE - TYPE 3 OR H

POLE DRILLING DETAIL



55 FT AND TALLER CONCRETE POLE - TYPE H, LT, HT & 80-100 FT XHT